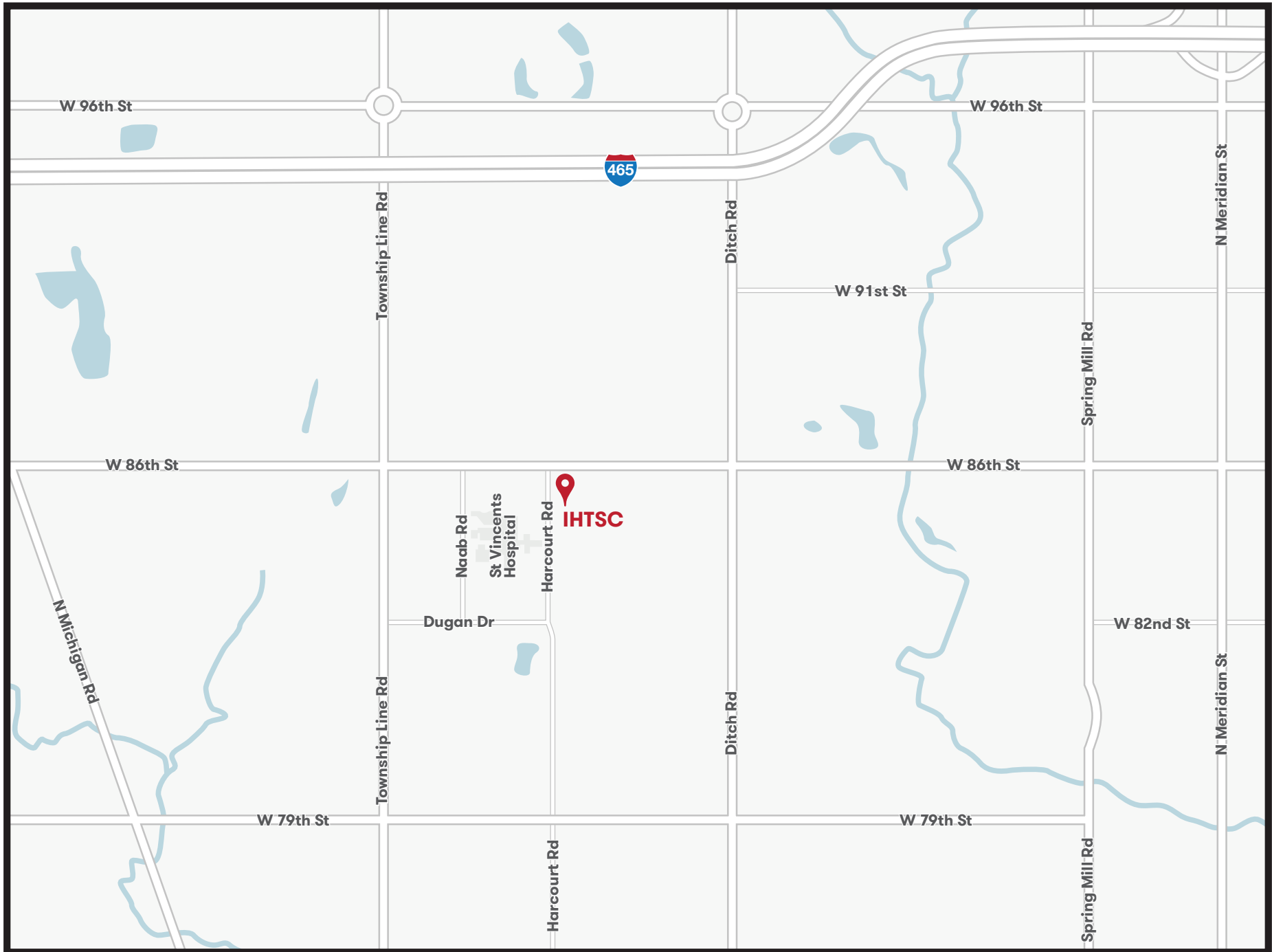


# INDIANAPOLIS-NORTHSIDE



# INDIANAPOLIS-NORTHSIDE

## Indiana Hand to Shoulder Center

8501 Harcourt Road  
Indianapolis, IN 46260

Phone: (317) 875-9105

### Physicians at this location



Kleinman



Fischer



Creighton, Jr



Baltera



Greenberg



Kaplan



Merrell



Knox



Crosby



Peck



Smetana

### Therapy at this location

Yes

### Driving Directions

#### North

- 465 to US 31
- South on US 31 to 86th St.
- West on 86th St. to Harcourt Road
- South on Harcourt Road
- Office on left

#### South

- I 65 N. to Meridian St. exit
- North on Meridian to 86th St.
- West on 86th St. to Harcourt Road
- South on Harcourt Road
- Office on left

#### West

- 465 N. to Michigan Road
- South on Michigan Road
- East on 86th S.
- South on Harcourt Road
- Office on left

#### East

- I 70 W. to I 65 N, Meridian St. exit
- North on Meridian to 86th St.
- West on 86th St. to Harcourt Road
- South on Harcourt Road
- Office on left